



**ION LIGHTING™**  
architectural lighting & design

|               |  |
|---------------|--|
| Project Name: |  |
| Catalog #:    |  |
| Fixture Type: |  |
| Notes:        |  |

### PRODUCT DESCRIPTION

The 2X4FT LED troffers fixture are delivering high Lumen of exceptional 80+ CRI light while achieve 125 lumens per watt. It is available in 3000k, 3500k, 4000k Tunable CCT options and 0-10V dimming, which is perfect for new construction applications or retrofitting existing fluorescent troffer fixtures with recessed installation, widely used in office spaces, major retail stores, education, government, healthcare, and hospitality.

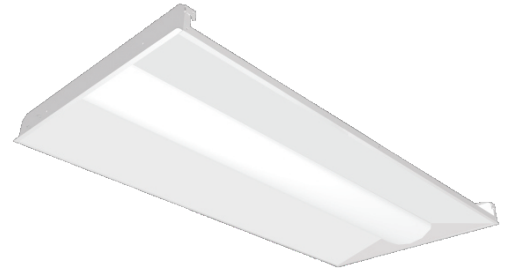
### PERFORMANCE SUMMARY

- Efficacy: 125LPW
- Delivered Light Output: 3750lm/5000lm/6000lm
- Input Power: 30/40/50Watts
- CRI: Ra>80
- Tunable CCT: 3000K/3500K/4000K with a selector switch
- Input Voltage: 100-277 VAC
- Input current: 0.40A
- THD:<20%(at 277V)
- Power Factor: >0.9(277V)
- Driver output: DC27-40V,1.06A
- Standard Warranty: 5 Years
- Standard Lifetime: Designed to L70 minimum 50,000 hours
- Mounting: Recessed
- 0-10V dimming (20%-100% smooth dimming)
- Signal Current: <2mA
- Dimensions: L 47.7" x W 23.8" x H 2.8"
- Recommended Dimmers:DIVA-DVTV(LUTRON),IP710-DL(LEVITON)
- Fixture measurement and weight are round up, pls contact your OKT representative for exact data.

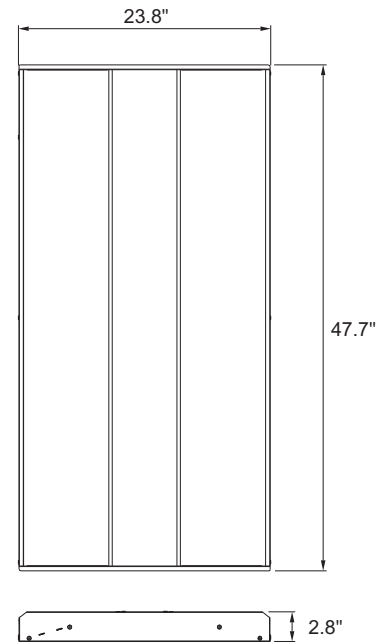
### REGULATORY & VOLUNTARY QUALIFICATIONS

|                    |     |
|--------------------|-----|
| UL Listed          | YES |
| DLC Qualifications | YES |
| LM79 Report        | YES |
| Damp Rated         | Yes |

## 2'X4' CCT Tunable LED Troffer Fixture



### Dimension



### ORDER INFORMATION



EXAMPLE:TF24-DM-40P

| Product category    | Size     | Dimming         | Fixture wattage    | CCT                | Version           |
|---------------------|----------|-----------------|--------------------|--------------------|-------------------|
| TF= Troffer fixture | 24=2'X4' | D=0-10v Dimming | TUNEABLE SEE ABOVE | TUNEABLE SEE ABOVE | P=Premium Version |

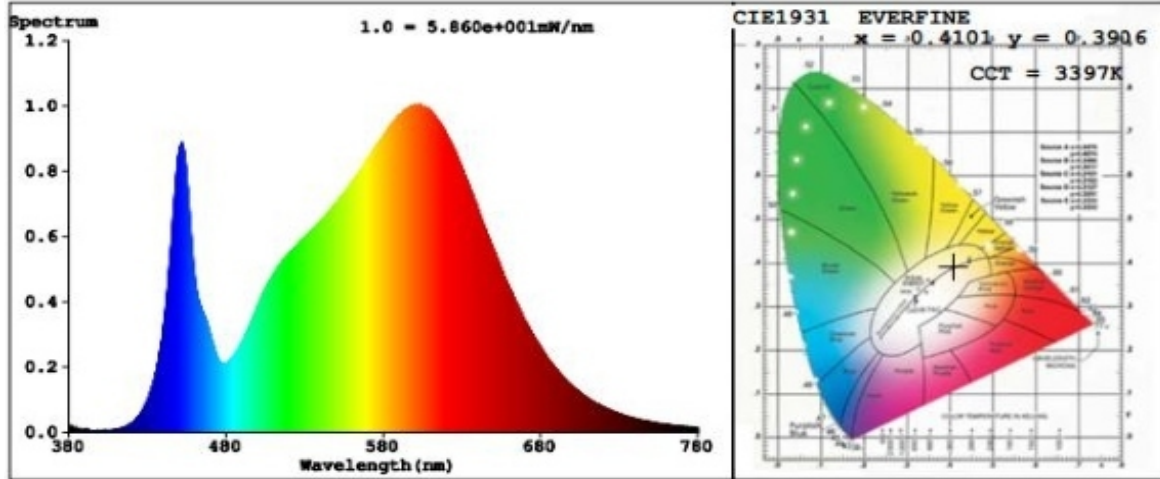


**ION LIGHTING™**  
architectural lighting & design

|               |  |
|---------------|--|
| Project Name  |  |
| Catalog #:    |  |
| Fixture Type: |  |
| Notes:        |  |

**TF24-DM-XXX**

**SPECTRAL POWER DISTRIBUTION & CHROMATICITY DIAGRAM**

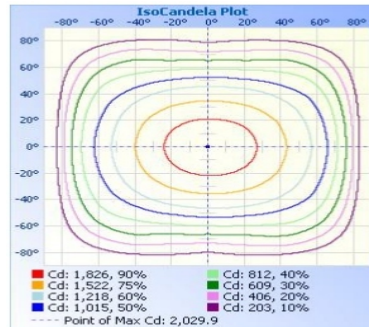
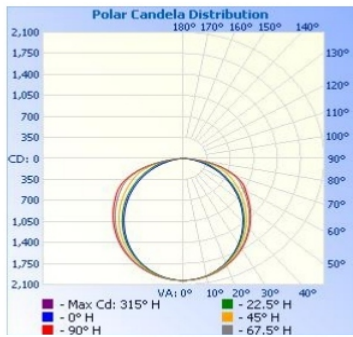


**ZONAL LUMEN TABULATION**

| Zonal Lumen Summary |         |            |
|---------------------|---------|------------|
| Zone                | Lumens  | %Luminaire |
| 0-30                | 1,567.3 | 26%        |
| 0-40                | 2,562.1 | 42.5%      |
| 0-60                | 4,562.8 | 75.8%      |
| 60-90               | 1,458.5 | 24.2%      |
| 70-100              | 657.4   | 10.9%      |
| 90-120              | 0.5     | 0%         |
| 0-90                | 6,021.4 | 100%       |
| 90-180              | 0.8     | 0%         |
| 0-180               | 6,022.2 | 100%       |

| Lumens Per Zone |        |         |         |        |         |
|-----------------|--------|---------|---------|--------|---------|
| Zone            | Lumens | % Total | Zone    | Lumens | % Total |
| 0-10            | 191.9  | 3.2%    | 90-100  | 0.2    | 0%      |
| 10-20           | 548.0  | 9.1%    | 100-110 | 0.2    | 0%      |
| 20-30           | 827.3  | 13.7%   | 110-120 | 0.2    | 0%      |
| 30-40           | 994.9  | 16.5%   | 120-130 | 0.1    | 0%      |
| 40-50           | 1037.1 | 17.2%   | 130-140 | 0.0    | 0%      |
| 50-60           | 963.6  | 16.0%   | 140-150 | 0.0    | 0%      |
| 60-70           | 801.4  | 13.3%   | 150-160 | 0.0    | 0%      |
| 70-80           | 524.5  | 8.7%    | 160-170 | 0.1    | 0%      |
| 80-90           | 132.7  | 2.2%    | 170-180 | 0.0    | 0%      |

**PHOTOMETRIC DATA**



|         | Illuminance at a Distance |                   |
|---------|---------------------------|-------------------|
|         | Center Beam fc            | Beam Width        |
| 17.0ft  | 7.02 fc                   | 44.6 ft 70.5 ft   |
| 34.0ft  | 1.76 fc                   | 89.1 ft 141.0 ft  |
| 51.0ft  | 0.78 fc                   | 133.7 ft 211.5 ft |
| 68.0ft  | 0.44 fc                   | 178.3 ft 282.0 ft |
| 85.0ft  | 0.28 fc                   | 222.9 ft 352.5 ft |
| 102.0ft | 0.20 fc                   | 267.4 ft 423.0 ft |

■ Vert. Spread: 105.3°  
■ Horiz. Spread: 128.5°

