



**ION LIGHTING™**  
architectural lighting & design

Project Name	
Catalog #	
Fixture Type	
Notes	

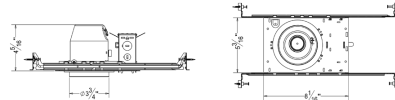
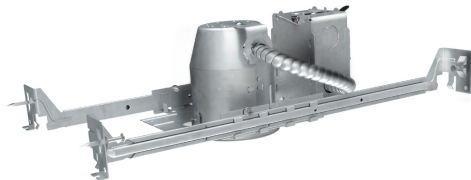
## A35

### 3.5" NEW CONSTRUCTION NON-IC RECESSED HOUSING

#### DESCRIPTION

Housing must be kept at least 3" away from insulation  
Can be installed in 1/2" to 1-3/8" thick ceilings  
Includes adjustable hanger bars with integral nail  
J-Box listed for through-branch circuit wiring (4 in-4 out), five 1/2" knockouts  
and four romex knockouts with strain clamps  
ETL listed for damp location W/Feed through

Lamp: LED 8W max. (See trim for max wattage)



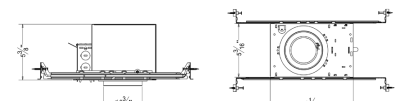
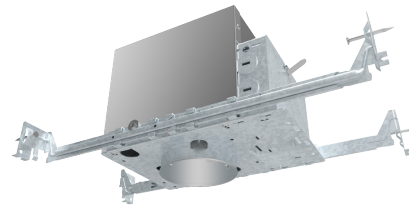
## A35-IA

### 3.5" NEW CONSTRUCTION AIRTIGHT IC RATED RECESSED HOUSING

#### DESCRIPTION

Designed for direct contact with insulation  
Can be installed in 1/2" to 1-3/8" thick ceilings  
Includes adjustable hanger bars with integral nail  
J-Box listed for through-branch circuit wiring (4 in-4 out), five 1/2" knockouts  
and four romex knockouts with strain clamps  
ETL listed for damp location W/Feed through

Lamp: LED 8W max. (See trim for max wattage)



## A35-R

### 3.5" REMODEL NON-IC RECESSED HOUSING

#### DESCRIPTION

Housing must be kept at least 3" away from insulation  
Can be installed in 1/2" to 1-3/8" thick ceilings  
J-Box listed for through-branch circuit wiring (4 in-4 out), five 1/2" knockouts  
and four romex knockouts with strain clamps  
ETL listed for damp location W/Feed through

Lamp: LED 8W max. (See trim for max wattage)

