



ION LIGHTING™
architectural lighting & design

Project Name	
Catalog #	
Fixture Type	
Notes	

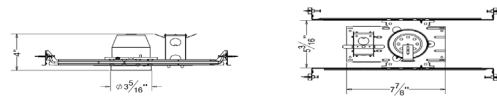
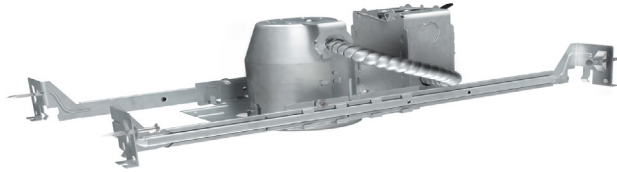
A3

3" NEW CONSTRUCTION NON-IC RECESSED HOUSING

DESCRIPTION

Housing must be kept at least 3" away from insulation
Can be installed in 1/2" to 1-3/8" thick ceilings
Includes adjustable hanger bars with integral nail
J-Box listed for through-branch circuit wiring (2 in-2 out or 4 in-4 out), five 1/2" knockouts and four romex knockouts with strain clamps
ETL listed for damp location W/Feed through

Lamp: LED 8W max. (See trim for max wattage)



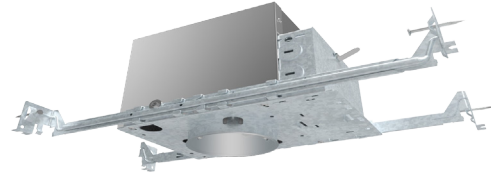
A3-1A

3" NEW CONSTRUCTION AIRTIGHT IC RATED RECESSED HOUSING

DESCRIPTION

Designed for direct contact with insulation
Can be installed in 1/2" to 1-3/8" thick ceilings
Includes adjustable hanger bars with integral nail
J-Box listed for through-branch circuit wiring (2 in-2 out or 4 in-4 out), five 1/2" knockouts and four romex knockouts with strain clamps
ETL listed for damp location W/Feed through

Lamp: LED 8W max. (See trim for max wattage)



A3-R

3" REMODEL NON-IC RECESSED HOUSING

DESCRIPTION

Housing must be kept at least 3" away from insulation
Can be installed in 1/2" to 1-3/8" thick ceilings
J-Box listed for through-branch circuit wiring (4 in-4 out), five 1/2" knockouts and four romex knockouts with strain clamps
ETL listed for damp location W/Feed through

Lamp: LED 8W max. (See trim for max wattage)

